

TWIN CST 95° - CRANKING 00

full overlay door



self-closing
Ref. No.
146.605.50.0015

hinge arm
stamped steel, nickel plated
hinge cup
stamped steel, nickel plated

CS 22 110° - CRANKING 00

full overlay door



self-closing
Ref. No.
146.322.54.0015

hinge arm
stamped steel, nickel plated
hinge cup
stamped steel, nickel plated

CS 05/90/4 - 95°

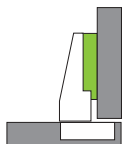


Knock-in Version
Ref. No.
146.405.54.9615

hinge arm
zinc diecast, nickel plated
hinge cup
stamped steel, nickel plated

TWIN CST 05 110° - CRANKING 00

full overlay door



Ref. No.
146.622.50.0015

hinge arm
stamped steel, nickel plated
hinge cup
stamped steel, nickel plated

CS 29 125° CRANKING 00

full overlay door



Screw-in Version
Ref. No.
146.329.55.0015

hinge arm
stamped steel, nickel plated
hinge cup
stamped steel, nickel plated

CS PCC



Ref. No.
146.700.01.0015

hinge arm
zinc diecast, nickel plated
hinge cup
zinc diecast, nickel plated
Screw-in version

TWIN CST 29 125° - CRANKING 00

full overlay door



Ref. No.
146.629.50.0015

hinge arm
stamped steel, nickel plated
hinge cup
stamped steel, nickel plated

Knock-in Version



Ref. No.
146.329.56.0015

CS 05/45/3 - 95°

inset door



Knock-in Version
Ref. No.
146.405.54.0315

hinge arm
zinc diecast, nickel plated
hinge cup
stamped steel, nickel plated
for 45° positive angle hinge for corner cabinet

CS & CST MOUNTING PLATES

height adjustable

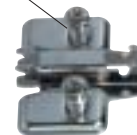
CS72.50NS37
"Economy" CS steel plate
for wood screw fixing



Ref. No.	Thickness	
314.393.81	00	15 nickel plated
	02	
	04	

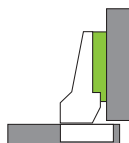
height adjustable

CS72.50NES37
"Economy" CS steel plate
with pre-mounted Euro screws



Ref. No.	Thickness	
318.393.81	00	15 nickel plated
	02	
	04	

half overlay door

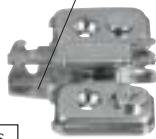


Ref. No.
146.629.50.0815

hinge arm
stamped steel, nickel plated
hinge cup
stamped steel, nickel plated

CS & CST Mounting Plates

excenter height adjustable



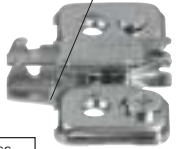
CS7259N

Ref. No.	Thickness	
314.393.69	00	15 nickel plated wood screw
	02	
	04	

6.3 x 13 mm

Euro screw countersunk
Ref. No. 707.330.61.3015


excenter height adjustable



CS7259E

Ref. No.	Thickness	
317.393.69	00	15 nickel plated
	02	
	04	

height adjustable



CS7250N37
"Superclip" plate for wood screw fixing

Ref. No.	Thickness	
315.393.55	00	15 nickel plated
	02	
	04	
	08	
	18	

6.3 x 13 mm

Euro screw countersunk
Ref. No. 707.330.61.3015


height adjustable



CS7250ES37
"Superclip" plate for Euro screws

Ref. No.	Thickness	
317.393.56	00	15 nickel plated
	02	
	04	
	08	
	18	

height adjustable

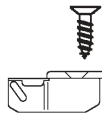


CS7251
Special mounting plate for face frame construction

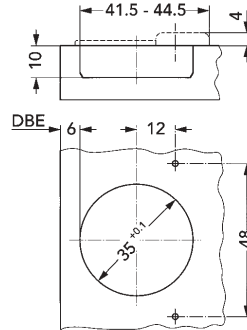
Ref. No.	Thickness	
346.290.8800	15 nickel plated	
	02	
	04	

ACC 140 - 130°

screw-on version



wood screw countersunk
Ø 3.5 x 13 mm
Ref. No. 499.060.58.0115



hinge arm
zinc diecast, nickel plated
hinge cup
zinc diecast, nickel plated

Ref. No. ACC 140 130°
276.743.59.9215

- One-piece concealed self-closing, face frame hinge
- No boring in the frame
- For overlays from 26-29 mm (11/32"-1-1/8")

ACC 175 - 110°

Two piece hinge



Ref. No. ACC 175
276.470.53.9915



Ref. No. ACC 175
276.470.54.9915

One piece hinge



Ref. No. ACC 170 1/4"
276.370.54.0615
ACC 170 1/2"
276.370.54.1315

Suitable mounting plates:

Ref. No.	
1/4"	348.258.00.1815
1-1/4"	348.258.00.0615
1/2"	348.258.00.3215
3/8"	348.258.00.3515



MEPLA-ALFIT

www.mepla-alfit.com

To insure accuracy of orders, please refer to the sizes and numbers shown in this catalog.

ACC 175

The logical continuation of the ACC 150 Series



- All Steel components
- 10 mm cup depth
- 3/4" door thickness
- Open hinge arm
- Open base plate for easy door assembly

Screw-in version



Product No.
ACC 175
276.470.53.9915




Dowel version



Product No.
ACC 175
276.470.54.9915

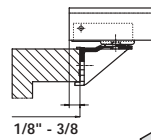


 wood screw countersunk
Ø 3.5 x 13 mm
Product No.
499.060.58.0115



Mounting Plates

1/4" Overlay

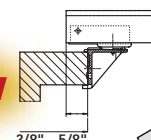


Product No. 348.258.00.0615

1/2" Overlay

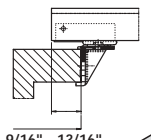


NEW



Product No. 348.258.00.1315

11/16" Overlay

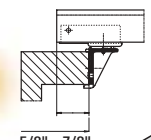


Product No. 348.258.00.1815

3/4" Overlay

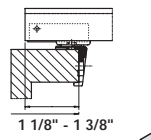


NEW



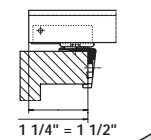
Product No. 348.258.00.1915

1 1/4" Overlay



Product No. 348.258.00.3215

1 3/8" Overlay

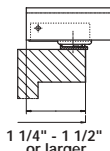


Product No. 348.258.00.3515

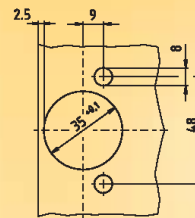
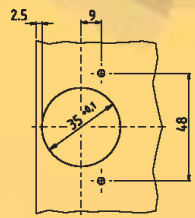
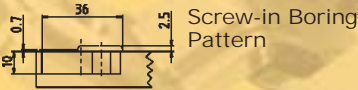
Face Plate 1 3/8" Overlay



NEW



Product No. 348.258.00.0015



MEPLA-ALFIT

Functional Hardware - Hinges

SYSTEM3200™

www.amerock.com

The Amerock System 3200™ Independent Adjustment Concealed Hinge program brings you economical solutions for all popular face frame and frameless cabinet applications.

- * Improved Fast-Clip® mounting with positive clip-action for fast, repeatable accuracy
- * Offered in 110° and 170° opening angles
- * Special hinges for corner cabinet applications are available
- * Economical choice for frame or frameless cabinets
- * EZ-Adjust® cam adjustable mounting plates offer simple, quick and reliable adjustment of Amerock's System 3200® Fast-Clip® Hinges
- * Available in Blum (3) and Grass (5) hole patterns

3200-A

Mt PIt Clip-on 0mm with Euro screw



3200-B

Mt PIt Clip-on 0mm without Euro screw



3200C-A

Mt PIt Clip-on 0mm 2-pc adjustable w/Euro screw



3200F-B

Mt PIt Clip-on face frame 0mm without Euro screw



3210B-A

Mt pIt for kidney for base corner cabinet with Euro screw



3210B-B

Mt PIt for base corner cabinet without Euro Screw 3240BB Hinge



3203-A

Mt PIt Clip on 3mm with Euro screw



3203F-B

Mt PIt clip-on face frame 3mm without Euro screw



3206F-B

Mt pIt clip-on face frame 6mm without Euro screw



3211C-3A

Clip on hinge 0mm 110 degree with dowels



3211C-3B

Clip on hinge 0mm 110 degree without dowels



3211C-3E

Easy set Clip on hinge 0mm 110 degree with dowels



3212C-3A

Clip on hinge 9mm 110 degree with dowels



3213C-3A

Clip on hinge 15mm 110 degree with dowels



3214C-3A

Clip on hinge 0mm 130 degree with dowels



3220-3A

Clip on hinge 45 degree corner with dowels



3230-3A

Clip on hinge 90 degree Blind corner with dowels



3271C-3A

Clip on hinge 0mm 170 degree with dowels



3240-3A

Clip on hinge base corner with dowels Use 3210B-B baseplate



3271C-3B

Clip on hinge 0mm 170 degree without dowels



3272-B HINGE



3272-PB

Mt. PIt clip on 3272-B 270 degree hinge and baseplate for entertainment center

MACHINERY/ACCESSORIES

MP80 Manual Machine - 110v

MP85P Pneumatic Machine 3 phase - 220v

MP85P-A Pneumatic Machine 1 phase - 220v

INSERTION RAMS

MP403 Blum 110° Hinge Machines

MP404 Amerock Machines 110° Hinge

MP413 Blum Machines 130° Hinge

MP414 Amerock Machines 130° Hinge



Marathon Series Hinge System

Marathon Series self-closing knife hinges are Amerock engineered for unmatched performance. Self-lubricating DuraFlex® action exceeds 250,000 cycles. These are revolutionary one-piece door wings for inset and overlay applications. Easy horizontal and vertical alignment and Guaranteed for as long as the original customer owns the home.

Functional Hardware - Hinges



Item Number	Description
3/8" Inset	
30CM260414	CM2604-BB 3/8" Hinge
30CM26043	CM2604-W 3/8" Hinge
30CM2604BB	CM2605-14 Hinge
30CM2604W	CM2605-3 Hinge
1/4" Overlay	
30CM260514	CM2605-14 Hinge
30CM26053	CM2605-3 Hinge
30CM2605BB	CM2605-BB Hinge
30CM2605W	CM2605-W 1/4" Hinge
1/2" Overlay	
30CM260614	CM2606-14 1/2" Hinge
30CM26063	CM2606-3 1/2" Hinge
30CM2606BB	CM2606-BB 1/2" Hinge
30CM2606W	CM2606-W 1/2" Hinge

2000 Series Hinge System

The smoothest performing hinge in it's class. Add smooth, quiet action and lock-in place alignment of System 2000 hinges to any face-frame cabinet. Just one hinge system is all you need to fit all common overlays and hole patterns. And one screw locks the hinge alignment in a 16-point jaw to eliminate callbacks for adjustments. Doors fit flush to within 4.5 mm for a sleek new look, with reveals as trim as 1/8".

BASEPLATES

30CM2005E14
CM-2005E-14 1-1/2" Overlay Hinge
full wrap



30CM2005F14
CM-2005F-14 1-5/8" Overlay
full wrap



30CM2005I14
CM-2005I-14 3/8" Overlay Hinge
full wrap



30CM2005J14
CM-2005J-14 1/2" Overlay
full wrap Hinge



30CM2006C14
CM-2006C-14 1-1/4" Overlay
Partial Wrap Hinge



30CM2006E14
CM-2006E-14 1-1/2" Overlay
Partial WrapHinge



30CM2006H14
CM2006H-14 1/4" Overlay
Partial Wrap Hinge



30CM2006I14
CM-2006I-14 3/8" Overlay
Partial Wrap Hinge



30CM2006J14
CM-2006J-14 1/2" Overlay
Partial Wrap Hinge



30CM2006L14
CM-2006L-14 3/4" Overlay
Partial Wrap Hinge



30CM2009I14
CM-2009I-14 Full Wrap
3/8" Overlay Hinge



30CM2009J14
CM-2009J-14 Full Wrap
1/2" Overlay Hinge



30CM2009L14
CM-2009L-14 Full Wrap
3/4" Overlay Hinge



30CM2008J14
CM-2008J-14
Full Wrap 1/2" Overlay 13/16" full
wrap Hinge



HINGES

30CM204114
CM-2041-1-14 Amerock Cup
with dowels



30CM204214
CM-2041-2-14 Grass Cup
with dowels



30CM2041314
CM-2041-3-14 Blum Cup
with dowels



30CM2041414
CM-2041-4-14 Mepla Cup
with dowels



30CM2042114
CM-2042-1-14 Amerock Cup
without dowels





BAR3P09 SALICE 0mm MTG PL CLIP EURO PLATE, WOOD SCREWS

BAR3P39 SALICE 3mm MTG PL CLIP EURO PLATE, WOOD SCREW



BAU3E19 SALICE 1mm MTG PL FACE CLIP

BAU3E49 SALICE 4mm MTG PL FACE CLIP

BAU3L19 SALICE 1mm MTG PL FACE CLIP

BAU3L49 SALICE 4mm MTG PL FACE CLIP



C276D99 SALICE 110 DEG 1/2" OVERLAY SC RAPIDO

C2P6D99 SALICE 110 DEG 1/2" OVERLAY SC SCREW ON

C2R6D99 SALICE 110 DEG 1/2" OVERLAY SC WITH DOWELS

C2R9D99 SALICE 120 DEG 1/2" OVERLAY SC DOWELED



C2P9A99 SALICE 120 DEG FULL OVERLAY SC SCREW ON

C2R6A99 SALICE 110 DEG FULL OVERLAY SC WITH DOWELS

C2R9A99 SALICE 120 DEG FULL OVERLAY SC WITH DOWELS



C2P6G99 SALICE 110 DEG 1/2 OVERLAY SC WOODSCREW

C2R6G99 SALICE 110 DEG 1/2 OVERLAY SC WITH DOWELS

C2R9G99 SALICE 120 DEG 1/2 OVERLAY SC WITH DOWELS



C2P7P99 SALICE INSET SELF CLOSE SCREW



C2RFA99 SALICE 165 DEG FULL OVERLAY SC WITH DOWELS



C2RFD99 SALICE 165 DEG HALF OVERLAY DOWELED



C2RYA99 SALICE PIE CUT CORNER HINGE DOWELED



CSP3799 SALICE 110, FACE FRAME HINGE 1/2" OVERLAY, SCREW-ON

CSR3499 SALICE 110, FACE FRAME HINGE 3/4" OVERLAY, W/DOWELS

CSR3799 SALICE 110, FACE FRAME HINGE 1/2" OVERLAY, W/DOWELS

C276A99 SALICE 110 DEG FULL OVERLAY SC RAPIDO

C226A99 SALICE 110 DEG FULL OVERLAY SC HETTICH BORING PATTERN RAPIDO

(Available In North Carolina)

